

# Technical data VE1200

CLAMPING UNIT		VE1200	
Clamping force	kN		1200
Toggle stroke	mm		360
Min. mold height	mm		150
Max. mold height	mm		460
Max. mold opening stroke	mm		820
Space between tie bars	mm		470x420
Min. mold dimension	mm		305x270
Ejector stroke	mm		100
Ejector force	kN (tf)		29.4 (3.0)
Mold platen dimension	mm		710x660

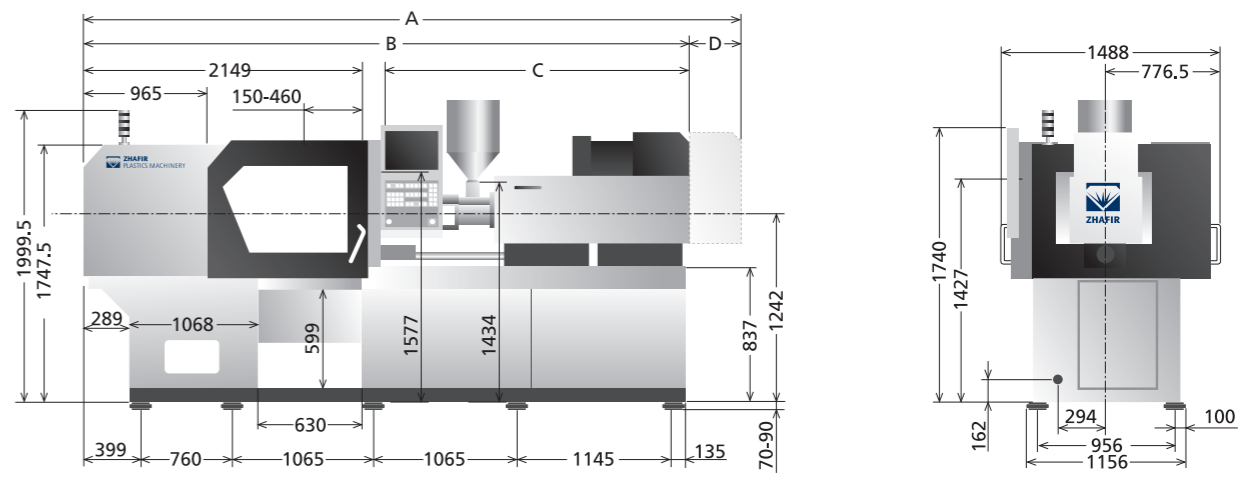
INJECTION UNIT	210h			210			300h			300			
	A	B	C	A	B	C	A	B	C	A	B	C	
Screw diameter	mm	28	32	36	28	32	36	32	36	40	32	36	40
Screw L/D ratio	L/D	21	21	18.6	21	21	18.6	22.5	20	18	22.5	20	18
Shot size (theoretical)	cm <sup>3</sup>	70	100	127	70	100	127	116	147	182	116	147	182
Injection weight (PS)	g	64	91	116	64	91	116	106	134	166	106	134	166
Injection speed	mm/s	350			150			300			150		
Injection rate (PS)	g/s	196	256	324	84	110	139	220	277	342	110	139	171
Injection pressure	MPa	260	200	160	260	200	160	253	200	162	253	200	162
	bar	2650	2040	1630	2650	2040	1630	2580	2040	1650	2580	2040	1650
Holding pressure	MPa	206	160	126	206	160	126	202	160	130	202	160	130
	bar	2100	1630	1280	2100	1630	1280	2060	1630	1320	2060	1630	1320
Screw speed	rpm	400			400			400			400		
Plasticizing capacity (PS)	g/s	11.0	16.0	22.0	11.0	16.0	22.0	16.0	22.0	30.0	16.0	22.0	30.0
Nozzle touch force	kN (tf)	24.5(2.5)											
Nozzle movement distance	mm	330						350					
Heating power	kW	7.0	8.6	8.6	7.0	8.6	8.6	8.6			8.6		

OTHERS									
Connection power	kW/A	31KW/55A		20KW/37A		36.7KW/65A		25.7KW/46A	
Hopper capacity	l	25		25		25		25	
Machine dimension (l x w x h)	m	4.60x1.49x2.00				4.83x1.49x2.00			
Machine weight	t	5.4				5.9			

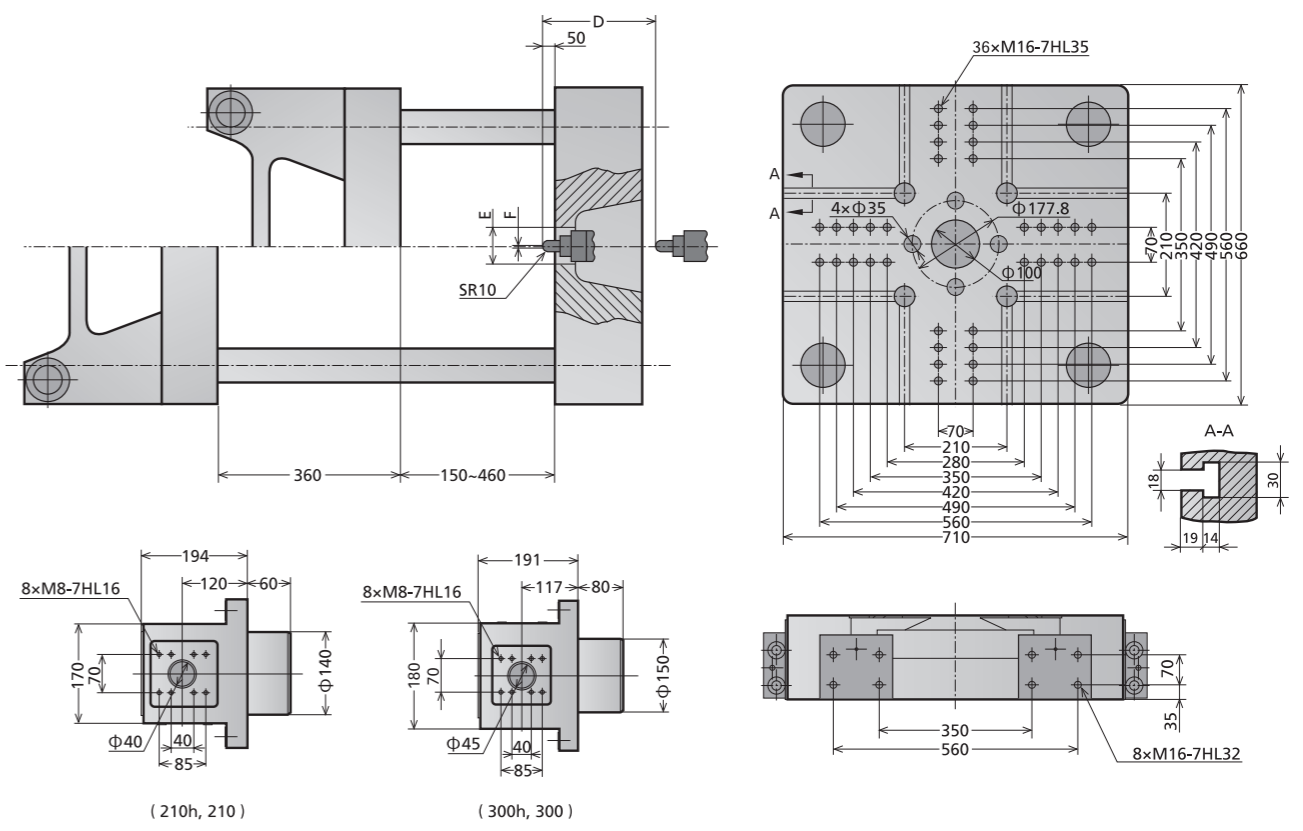
We reserve the right to make changes as a result of further technical advantages.

unit: mm

## Machine dimensions VE1200



## Platen dimensions VE1200



	A	B	C	D	E	F
210h, 210	4595	4265	2008	330	Φ125	Φ3
300h, 300	4832	4482	2225	350	Φ125	Φ3