

Technical data **VE600**

CLAMPING UNIT		VE600
Clamping force	kN	600
Toggle stroke	mm	270
Min. mold height	mm	150
Max. mold height	mm	350
Max. mold opening stroke	mm	620
Space between tie bars	mm	370x320
Min. mold dimension	mm	240x205
Ejector stroke	mm	70
Ejector force	kN (tf)	19.6 (2.0)
Mold platen dimension	mm	545x500

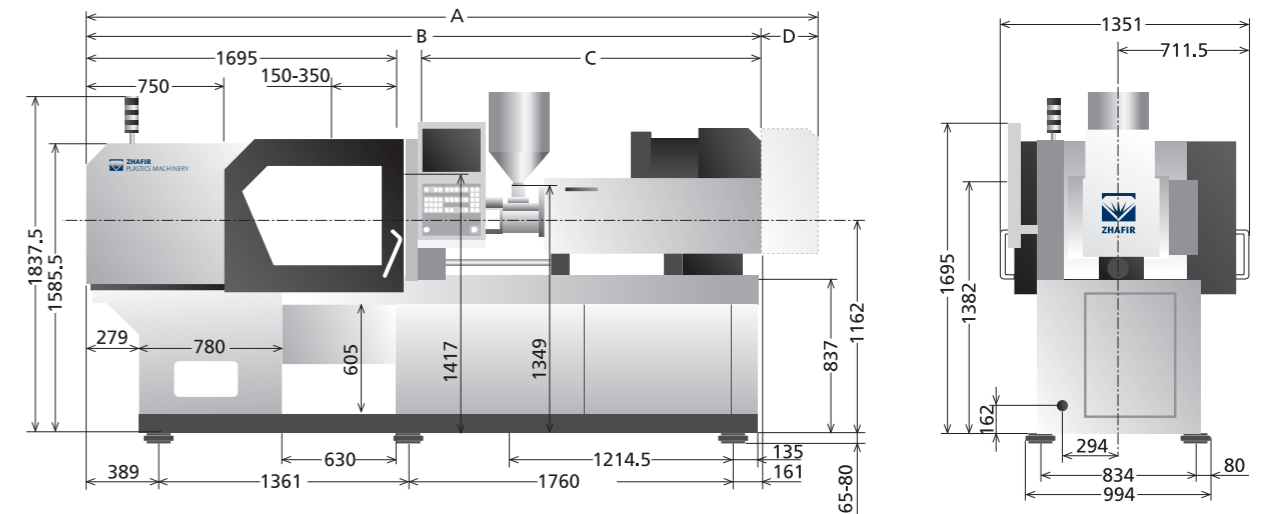
INJECTION UNIT		80h			80			120h			120		
		A	B	C	A	B	C	A	B	C	A	B	C
Screw diameter	mm	18	22	26	18	22	26	22	26	30	22	26	30
Screw L/D ratio	L/D	20	20	17	20	20	17	20	20	17.4	20	20	17.4
Shot size (theoretical)	cm ³	19	36	50	19	36	50	36	58	78	36	58	78
Injection weight (PS)	g	17.3	32.8	45.5	17.3	32.8	45.5	33	52	70	33	52	70
Injection speed	mm/s	350			150			350			150		
Injection rate (PS)	g/s	81	121	169	34	51	72	121	169	225	52	72	96
Injection pressure	MPa	280	220	157	280	220	157	280	200	150	280	200	150
	bar	2850	2240	1600	2850	2240	1600	2850	2040	1530	2850	2040	1530
Holding pressure	MPa	220	175	125	220	175	125	220	160	120	220	160	120
	bar	2240	1780	1270	2240	1780	1270	2240	1630	1220	2240	1630	1220
Screw speed	rpm	400			400			400			400		
Plasticizing capacity (PS)	g/s	3.8	6.0	8.8	3.8	6.0	8.8	6.0	8.8	13.0	6.0	8.8	13.0
Nozzle touch force	kN (tf)	14.7(1.5)											
Nozzle movement distance	mm	290						310					
Heating power	kW	3.8	5.4	5.4	3.8	5.4	5.4	5.4	7.0	7.0	5.4	7.0	7.0

OTHERS					
Connection power	kW/A	19KW/34A	12KW/21.4A	25KW/44.7A	15.1KW/27A
Hopper capacity	l	15	15	15	15
Machine dimension (l x w x h)	m	3.73x1.35x1.83		3.98x1.35x1.83	
Machine weight	t	3.3		3.7	

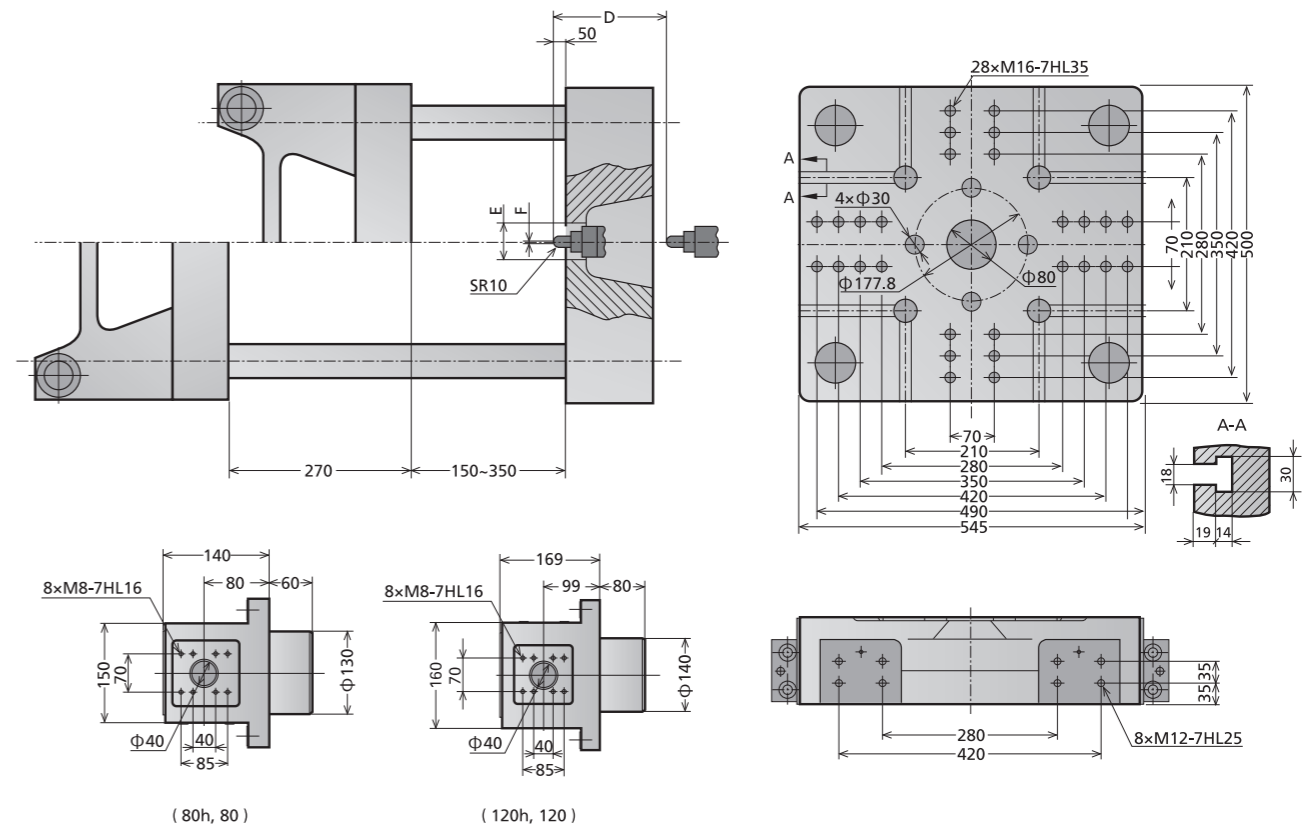
We reserve the right to make changes as a result of further technical advantages.

unit: mm

Machine dimensions VE600



Platen dimensions VE600



	A	B	C	D	E	F
80h, 80	3750	3460	1625	290	Φ100	Φ2
120h, 120	3981	3671	1836	310	Φ100	Φ2