

Technical data VE900

CLAMPING UNIT		VE900
Clamping force	kN	900
Toggle stroke	mm	320
Min. mold height	mm	150
Max. mold height	mm	380
Max. mold opening stroke	mm	700
Space between tie bars	mm	420x370
Min. mold dimension	mm	270x240
Ejector stroke	mm	80
Ejector force	kN (tf)	19.6 (2.0)
Mold platen dimension	mm	615x570

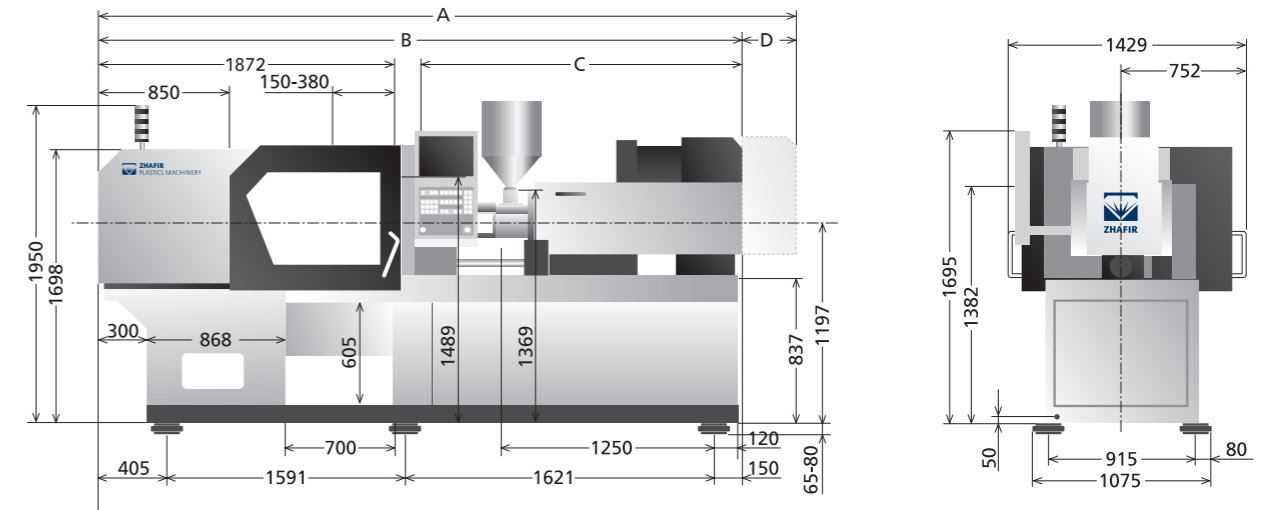
INJECTION UNIT	120h			120			210h			210			
	A	B	C	A	B	C	A	B	C	A	B	C	
Screw diameter	mm	22	26	30	22	26	30	28	32	36	28	32	36
Screw L/D ratio	L/D	20	20	17.4	20	20	17.4	21	21	18.6	21	21	18.6
Shot size (theoretical)	cm ³	36	58	78	36	58	78	70	100	127	70	100	127
Injection weight (PS)	g	33	52	70	33	52	70	64	91	116	64	91	116
Injection speed	mm/s	350			150			350			150		
Injection rate (PS)	g/s	121	169	225	52	72	96	196	256	324	84	110	139
Injection pressure	MPa	280	200	150	280	200	150	260	200	160	260	200	160
	bar	2850	2040	1530	2850	2040	1530	2650	2040	1630	2650	2040	1630
Holding pressure	MPa	220	160	120	220	160	120	206	160	126	206	160	126
	bar	2240	1630	1220	2240	1630	1220	2100	1630	1280	2100	1630	1280
Screw speed	rpm	400			400			400			400		
Plasticizing capacity (PS)	g/s	6.0	8.8	13.0	6.0	8.8	13.0	11.0	16.0	22.0	11.0	16.0	22.0
Nozzle touch force	kN (tf)	19.6(2.0)											
Nozzle movement distance	mm	310						330					
Heating power	kW	5.4	7.0	7.0	5.4	7.0	7.0	7.0	8.6	8.6	7.0	8.6	8.6

OTHERS					
Connection power	kW/A	25KW/44.7A	15.1KW/27A	31KW/55A	20KW/37A
Hopper capacity	l	15	15	25	25
Machine dimension (l x w x h)	m	4.19x1.43x1.83		4.38x1.43x1.83	
Machine weight	t	4.3		4.6	

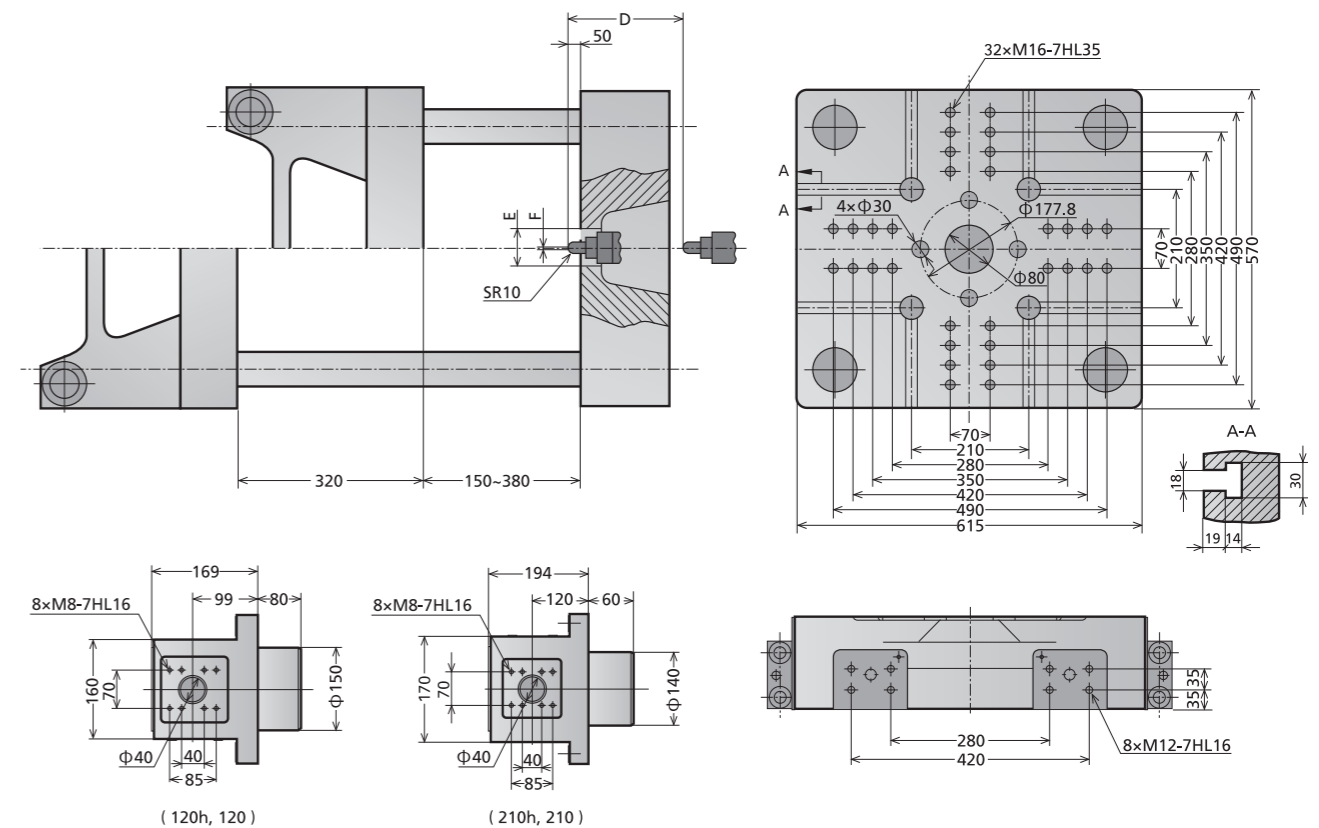
We reserve the right to make changes as a result of further technical advantages.

unit: mm

Machine dimensions VE900



Platen dimensions VE900



	A	B	C	D	E	F
120h, 120	4188	3878	1836	310	Φ100	Φ2
210h, 210	4380	4050	2008	330	Φ125	Φ3